



**ДЕМЛИНК**

since 1992

ООО «ДЕМЛИНК»  
+7 (495) 129-21-00  
+7 (495) 252-00-32  
info@demlink.ru  
demlink.ru

АВИА И Ж/Д БИЛЕТЫ • ГОСТИНИЦЫ • ВИЗЫ • ТРАНСПОРТ • ВЫСТАВКИ • МЕРОПРИЯТИЯ • КОНФЕРЕНЦИИ • VIP – ОБСЛУЖИВАНИЕ • ОТДЫХ

---

# **The 16<sup>th</sup> International Exhibition of Fabrics and Accessories for Garment Production TEXTILE SALON**

## **02 September – 04 September 2025**

### **“Crocus Expo”, Moscow, Russia**



## Visa to Russia

### **Textile Salon–2025.**

**02 September – 04 September 2025, “Crocus Expo”, Moscow, Russia**

**For your stay in Russia you need a VISA.**

Please do not forget to apply for it to the Russian Consulate early enough.

Information on documents and registration procedure <https://evisa.kdmid.ru/>

Should you have any questions please do not hesitate to contact DEMLINK

#### **Hotel booking, transfers**

Office 1, 1st Smolensky Pereulok 24,  
Moscow, 121099, Russia  
Tel: +7 (495) 129-21-00  
Fax: +7 (495) 252-00-32  
[incoming@demlink.ru](mailto:incoming@demlink.ru)  
[www.demlink.ru](http://www.demlink.ru)

#### **Visa support -**

1st Smolensky Pereulok 24,  
Moscow, 121099, Russia  
Tel: +7 (495) 129-21-00  
Fax: +7 (495) 252-00-32  
[visa@demlink.ru](mailto:visa@demlink.ru)  
[www.demlink.ru](http://www.demlink.ru)

SERVICE FOR PARTICIPANTS AND VISITORS OF THE EXHIBITION

**Textile Salon –2025.**

**02 September – 04 September 2025, “Crocus Expo”, Moscow, Russia**

## **Hotel Petroff Palace | 5 ★**

**10.93 km from Crocus City Hall**



**Hotel Petroff Palace - Moscow, City Moscow, 40 Leningradsky avenu**

Airports: Sheremetyevo - 21,94 km, Vnukovo - 27,78 km, Ostafyevo - 32,38 km, International airport Zhukovsky - 43,8 km, Zhukovsky - 43,91 km

Railway station: Savelovsky - 2,25 km, Belorussky - 2,55 km, Rizhsky - 5,02 km

Subway: Petrovsky Park - 0,41 km, Dinamo - 0,52 km, CSKA - 1,26 km

Attractions: Petrovsky Palace - 0,06 km, Petrovsky Park - 0,08 km, Annunciation of Holy Mother Church - 0,3 km, Dynamo Stadium - 0,52 km, CSKA Sports Complex - 0,87 km

## **Radisson Collection Hotel Moscow | 5 ★**

**13.82 km from Crocus City Hall**



**Radisson Collection Hotel - Moscow, Kutuzovskyy Prospekt, 2/1, building 1**

Airports: Vnukovo - 25 km, Sheremetyevo - 26,54 km, Ostafyevo - 27,87 km, International Airport Zhukovsky - 40,56 km, Zhukovsky - 40,65 km  
Railway Station: Kievskiy - 0,99 km, Belorussky - 2,92 km, Savelovsky - 4,95 km

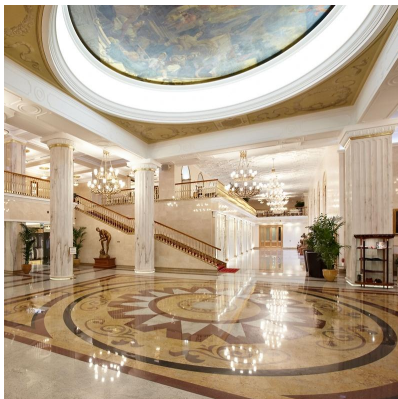
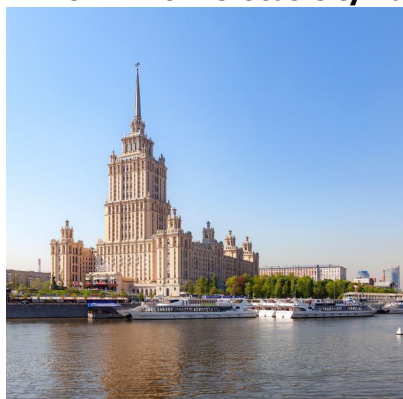
Subway: Kievskaya - 0,87 km

Attractions:

World Trade Center - 0,65 km, Russian Federation Government House – White House - 0,66 km, «Red Presnya» Park - 0,99 km, US Embassy - 1 km, F.I. Shalyapin’s House-Museum - 1,24 km

## Arbat Stars (ex. Marriott Moscow New Arbat) | 5 ★

14.48 km from Crocus City Hall



**Arbat Stars - Moscow, Novy Arbat, 32**

Airports: Vnukovo - 25,85 km, Sheremetyevo - 26,7 km, Ostafyevo - 28,21 km, International Airport Zhukovsky - 39,86 km, Zhukovsky - 39,96 km

Railway Station: Kievskiyii - 1,53 km, Belorussky - 2,57 km, Paveletsky - 4,52 km

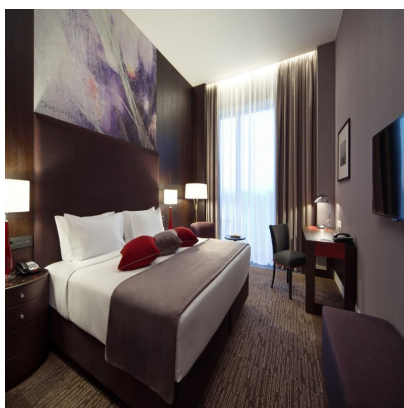
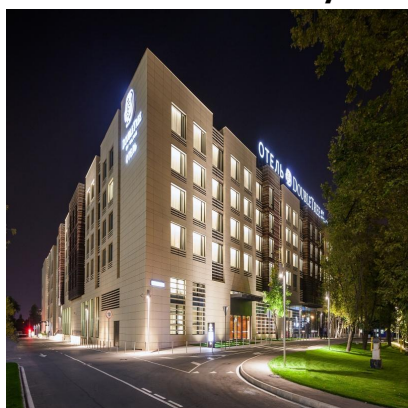
Subway: Smolenskaya - 0,63 km, Krasnopresnenskaya - 0,81 km

Attractions:

US Embassy - 0,3 km, House of I.S. Ostroukhov in Trubniki - 0,4 km, F.I. Shalyapin's House-Museum - 0,4 km, Russian Federation Government House - White House - 0,48 km, State Film Actor Theater - 0,52 km

## Hotel DoubleTree by Hilton Hotel Moscow - Marina | 4 ★

6.26 km from Crocus City Hall



**Hotel DoubleTree by Hilton Hotel Moscow - Marina - Moscow, City Moscow, Building 1, 39 Leningradskoye highway**

Airports: Sheremetyevo - 16,32 km, Vnukovo - 29,19 km, Ostafyevo - 36,75 km, International airport Zhukovsky - 49,83 km, Zhukovsky - 49,93 km

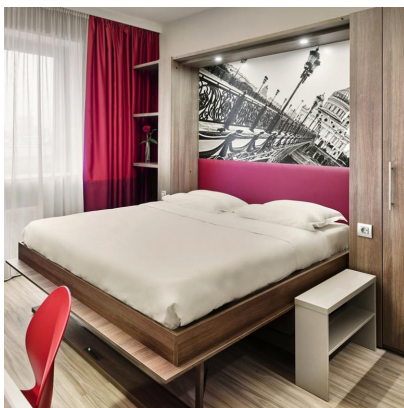
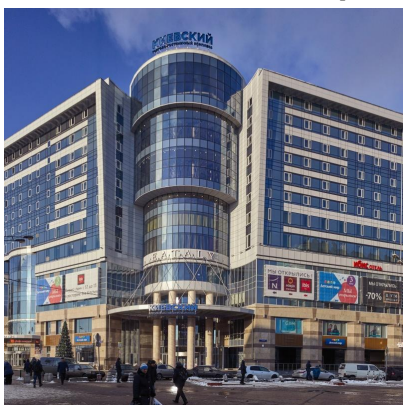
Railway station: Khimki - 7,2 km, Savelovsky - 7,76 km, Belorussky - 8,67 km

Subway: Vodny Stadion - 0,77 km, Baltiyskaya - 1,07 km, Voykovskaya - 1,75 km

Attractions: Hunting and Fishing Museum - 0,76 km, Porkovskoye-Streshnevo-Glebovo Estate - 1 km, Pokrovskoye-Streshnevo Park - 1,06 km, Friendship Park - 2,24 km, Otkrytie Arena - 3,24 km

## Hotel Adagio Moscow Kievskaya | 4 ★

14.21 km from Crocus City Hall



**Hotel Adagio Moscow Kievskaya - Moscow, City Moscow, 2 Kievskaya street**

Airports: Vnukovo - 24,24 km, Ostafyevo - 26,94 km, Sheremetyevo - 27,33 km, International airport Zhukovsky - 40,27 km, Zhukovsky - 40,36 km

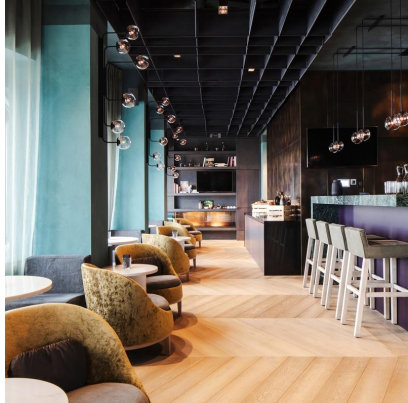
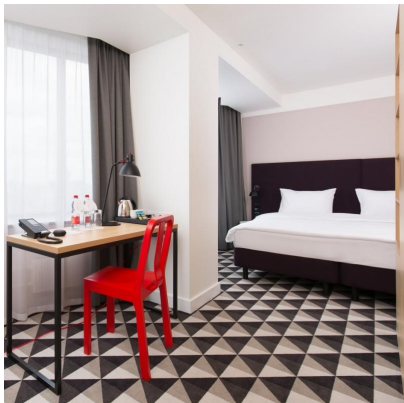
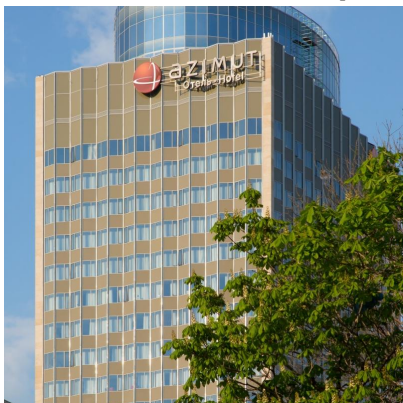
Railway station: Kievsky - 0,22 km, Belorussky - 3,86 km, Paveletsky - 5,05 km

Subway: Kievskaya - 0,26 km, Kievskaya - 0,26 km, Kievskaya - 0,26 km

Attractions: Moscow World Trade Centre - 1,35 km, Expocentre Exhibition Complex on Krasnaya Presnya - 1,36 km, Ministry of Foreign Affairs of Russia - 1,42 km, Government House of the Russian Federation - the White House - 1,51 km, Krasnaya Presnya Park - 1,52 km

## Azimut Smolenskaya Moscow | 4 ★

14.89 km from Crocus City Hall



**Azimut Smolenskaya- Moscow, Smolenskaya st., 8**

Airports: Vnukovo - 25,31 km, Sheremetyevo - 27,41 km, Ostafyevo - 27,43 km, International Airport Zhukovsky - 39,48 km, Zhukovsky - 39,58 km

Railway Station: Kievskiy - 1 km, Belorussky - 3,35 km, Paveletsky - 4,14 km

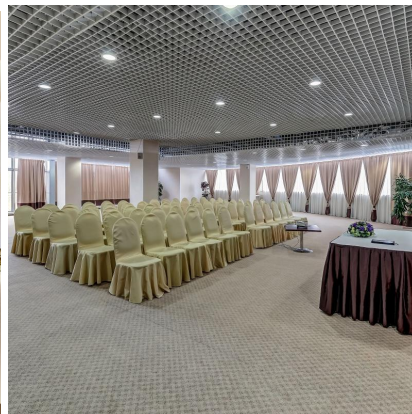
Subway: Smolenskaya - 0,29 km, Kievskaya - 0,9 km

Attractions:

Ministry of Foreign Affairs of the Russian Federation - 0,27 km, Theater named after E.Vakhtangov - 0,82 km, Art Gallery of Zurab Tsereteli - 1,07 km, House of I.S. Ostroukhov in Trubniki - 1,03 km, Russian Federation Government House - White House - 1,07 km

## Aquarium Hotel | 3 ★

0.53 km from Crocus City Hall



**Aquarium Hotel - Moscow region, City Krasnogorsk, 20 Mezhdunarodnaya street**

Airports: Sheremetyevo - 16,29 km, Vnukovo - 26,46 km, Ostafyevo - 36,94 km, International airport Zhukovsky - 54,4 km, Zhukovsky - 54,5 km

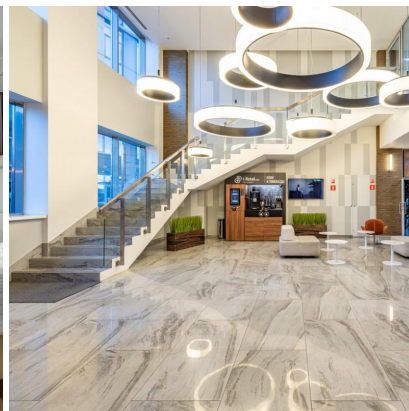
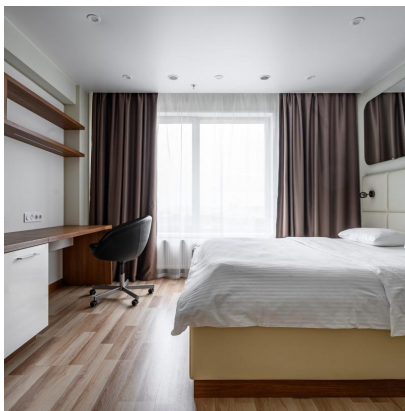
Railway station: Pavshino - 3,45 km, Krasnogorskaya - 5,54 km, Khimki - 8,32 km

Subway: Myakinino - 0,4 km, Volokolamskaya - 0,98 km, Mitino - 2,67 km

Attractions: Crocus City Hall - 0,53 km, Crocus Expo International Exhibition Centre - 0,53 km, Shezh.Kom Sports Complex - 2,17 km, Bratsevo Estate - 2,32 km, Otkrytie Arena - 3,35 km

## Ye's Mitino Apart-Hotel | 3 ★

2.21 km from Crocus City Hall



**Ye's Mitino Apart-Hotel - Moscow, City Moscow, 16 Mitinskaya street**

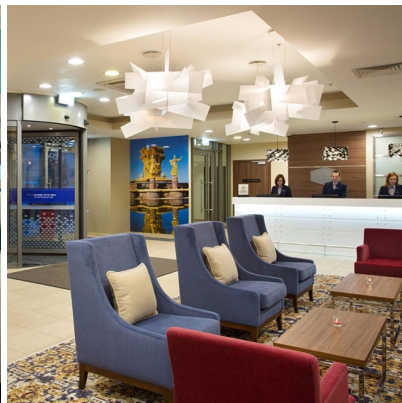
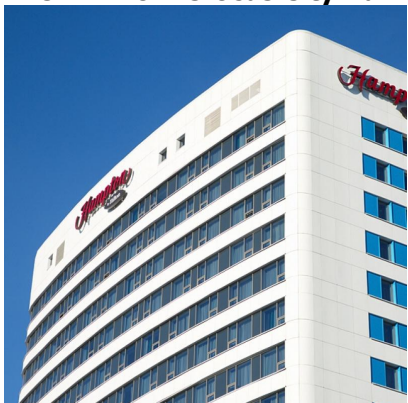
Airports: Sheremetyevo - 14,87 km, Vnukovo - 27,7 km, Ostafyevo - 38,7 km, International airport Zhukovsky - 56,15 km, Zhukovsky - 56,25 km  
Railway station: Pavshino - 3,66 km, Krasnogorskaya - 5,27 km, Khimki - 7,59 km

Subway: Mitino - 0,82 км, Volokolamskaya - 0,92 km, Pyatnitskoye shosse - 1,9 km

Attractions: Bratsevo Estate - 1,72 km, Crocus City Hall - 2,21 km, Crocus Expo International Exhibition Centre - 2,21 km, Shezh.Kom Sports Complex - 3,06 km, German Anti-fascist Memorial Museum - 4,06 km

# Hotel Hampton by Hilton Moscow Strogino | 3 ★

2.28 km from Crocus City Hall



## Hotel Hampton by Hilton Moscow Strogino - Moscow, City Moscow, 20 Kulakov street

Airports: Sheremetyevo - 19,02 km, Vnukovo - 23,85 km, Ostafyevo - 34,25 km, International airport Zhukovsky - 52,93 km, Zhukovsky - 53,02 km

Railway station: Pavshino - 3,42 km, Krasnogorskaya - 5,49 km, Nemchinovka - 9,81 km

Subway: Strogino - 0,79 km, Myakinino - 2,47 km, Spartak - 3,25 km

Attractions: Shezh.Kom Sports Complex - 2,1 km, Crocus City Hall - 2,28 km, Crocus Expo International Exhibition Centre - 2,28 km, Otkrytie Arena - 3,52 km, Bratsevo Estate - 5,03 km

*Please note: if payment is made via bank transfer, the bank commission should be paid by the customer*

### Transfer

Transfer „Airport – Hotel” or „Hotel – Airport”(one way) individual – from €40 (Auto, 3 pax)

Transfer „Airport – Hotel” or „Hotel – Airport”(one way) group – from €70 (minibus, 5 pax)

Transfer “Hotel – Moscow City, Afimall or Moscow City, Afimall – Hotel (one way) – from €40 (Auto, 3 pax)

Transfer “Hotel – Moscow City, Afimall” or “Moscow City, Afimall – Hotel” (one way) – from €70 (minibus, 5 pax)

Should you have any questions please do not hesitate to contact DEMLINK

#### Hotel booking, transfers

Office 1, 1st Smolensky Pereulok 24,  
Moscow, 121099, Russia  
Tel: +7 (495) 129-21-00

[incoming@demlink.ru](mailto:incoming@demlink.ru)  
[www.demlink.ru](http://www.demlink.ru)

#### Visa support – Irek Murtazin

1st Smolensky Pereulok 24,  
Moscow, 121099, Russia  
Tel: +7 (495) 129-21-00

[Irek.Murtazin@demlink.ru](mailto:Irek.Murtazin@demlink.ru)  
[www.demlink.ru](http://www.demlink.ru)

## FORM 5.1

**Textile Salon–2025. 02 September – 04 September 2025, “Crocus Expo”, Moscow, Russia**

### VISA INVITATION

I need (mark the required visa, see the above page)

1. Business visa

1. Tourist visa

**Important:** The invitation will be issued from Demlink to all applicants with the following personal data provided as required. Inaccurate information may cause delay or failure of invitation issue. Therefore, please type or write in print letters clearly and correctly. When you need an invitation for more than one person, please make a photocopy of this form and fill it in the same manner.

Surname:

First name:

Citizenship:

Date of Birth:

Passport No.

Sex:

Date of Arrival:

Date of Departure:

Time of Arrival

Flight No.:

Exhibition/Conference/Date:

Company Name:

Address:

Job Title:

Tel. No.

Contact

Fax No.

Person:

E-mail:

Consulate outside of Russia at which you are going to apply for visa

I hereby request an invitation

Date: \_\_\_\_\_ Signature: \_\_\_\_\_



## SERVICE FOR EXHIBITORS AND VISITORS OF THE EXHIBITION

- HOTEL ACCOMMODATION**  
**TRANSFERS FROM AND TO AIRPORTS/ RAILWAY STATIONS**  
**VISA SUPPORT**  
**AIR/TRAIN TICKETS**  
**EXCURSIONS**  
**VIP SERVICE AT AIRPORT**

We are glad to offer special hotel rates for participants and visitors  
 For guaranteed reservations, please send room reservation requests in advance. It is necessary to specify in the order : “For participants “Textile Salon–2025”

*Please note: if payment is made via bank transfer, the bank commission should be paid by the customer*

### FORM 5.2

#### AGREEMENT - ORDER FOR HOTEL ACCOMMODATION, TRANSFER & BOARD

<b>Exhibition</b>	<b>Textile-Salon –2025.</b> <b>02 September – 04 September 2025, “Crocus Expo”, Moscow, Russia</b>		
<b>Company</b>			
		<b>E-mail:</b>	
<b>Phone</b>		<b>Fax</b>	
<b>Person to contact</b>			

<b>HOTEL</b>				
Please note the hotel's name from list				
<b>HOTEL</b>				
Please note hotel's name <b>not from list</b> if you wish to book another one				
Date of arrival	Time of arrival	Single rooms Names	Date of departure	Time of departure
		_____		
		_____		
Date of arrival	Time of arrival	Double rooms Names	Date of departure	Time of departure
		1. _____		
		2. _____		
		1. _____		
		2. _____		
		1. _____		
		2. _____		
<i>Form of payment (please remark)</i>		Prepayment by credit card or bank transfer		

If you need a transfer to the hotel from the airport or railway station, or a return transfer, please fill out the following form.

The cost of the transfer is fixed and will be calculated depending on the place of delivery, traffic and car class.

If you need to be met at the airport or railway station please fill in enclosed form.

Railway station or airport name				
<b>Flight / train № arrival</b>	<b>From</b>	<b>Arrival date</b>	<b>Arrival time</b>	<b>Number of persons</b>
<b>Flight / train № departure</b>	<b>To</b>	<b>Departure date</b>	<b>Departure time</b>	<b>Number of persons</b>

The driver with the inscription \_\_\_\_\_ will be waiting for you in the arrival hall (at the airport) or by the locomotive (in the railway station)